

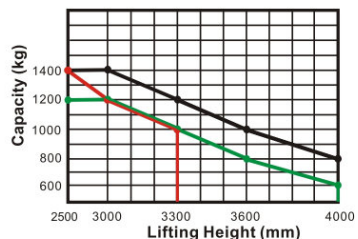
型号/Model: CDD14-930

AC 1200-1400Kg

(起升高度:1400-4000mm)

窄腿

载荷曲线图 Load Curve



- CDD12-030
- CDD14-930
- CDD14-980



优点:

配置和性能

- 电子助力转向, 轻便、静音;
- 双路电磁阀, 三种下降速度模式;
- 驱动单元专利设计浮动机构;
- 交流驱动, 无碳刷、免维护;
- 美国CURTIS驱动控制器;
- 电磁、再生制动系统;
- 起升自动限位, 长寿命接近开关。

安全

- 弯道自动减速装置, 更安全;
- 货叉高货位, 车辆行驶自动减速;
- 驱动无级调速, 安全、静音;
- 控制器多重自动保护系统;
- 紧急反向装置/紧急制动开关;
- 高货位车辆行驶自动减速。

Advantages:

Configuration And Performance

- Electronic power steering system, light and low noise.
- Two-way magnetic valve, three drop speed mode.
- Drive unit floating bodies with patent design.
- AC Driving system, No carbon brush, maintenance free.
- USA CURTIS driving controller.
- Electromagnetic, regenerative braking system.
- Automatic lifting limit, proximity switch, long life.

Safety

- Curve automatic deceleration devices, more safe.
- Goods high position, vehicle automatic deceleration.
- Stepless speed control system, safe and quiet.
- Controller with Multiple automatic protection.
- Emergency reversing device/Emergency brake switch.
- High position automatic reduction device.

车型 Type	起升高度 mm Lift height	门架类型 Mast type	货叉外侧间距 mm Outside width between forks	货叉内侧间距 mm Inside width between forks
CDD12-030	2000/2500/3000/3300/3600/4000	两级标准/2-STAGE STD		
CDD14-930	1400/2000/2500/3000/3300/3600/4000	两级标准/2-STAGE STD	550/600/650/685	180/230/280/315
CDD14-980	2500/3000/3300	两级全自由/FULL FREE 2-STAGE		

特性 Feature

型号 Model	单位	CDD12	CDD14	CDD14
配置号 Configuration No.		030	930	980
类型 Type		窄腿 Narrow legs	窄腿 Narrow legs	窄腿 Narrow legs
门架类型 Mast type		两级标准 2-Stage STD	两级标准 2-Stage STD	两级全自由 Full free 2-Stage
额定载重 Load capacity	kg	1200	1400	1400
载荷中心距 Load center	mm	600	600	600
轴距 Wheel base	mm	1270	1325	1325
操作类型 Operating type		步行式/驾乘式 Walkie / Stand On		

车轮 Wheels

轮子类型(前/后) Wheels type		PU	PU	PU
驱动轮/平衡轮/承重轮 Wheel quantity Driving wheel/Balance wheel/Bearing wheel		1/2/4	1/2/4	1/2/4

尺寸 Dimension

标准门架起升高 Standard lift height	mm	2000/2500/3000 /3300/3600/4000	1400/2000/2500 /3000/3300/3600/4000	2500/3000/3300
货叉最低高度 Lowered fork height	mm	85	85	85
标准货叉规格(长/宽/厚) Fork size(length/width/thickness)	mm	1150(1220)/185/55	1150(1220)/185/55	1150(1220)/185/55
整车全长, 踏板收起/放下 Overall length	mm	1993/2413	2050/2470	2050/2470
车体宽度 Overall width	mm	812	856	856
门架作业时整车最大高度 Max extend height	mm	2500/3000/3500 /3800/4100/4500	1900/2500/3000 /3500/3800/4100/4500	3000/3500/3800
门架缩回时整车静态高度 Mast lowered height	mm	1535/1765/1980 /2135/2335/2500	1185/1535/1765 /1980/2135/2335/2500	1830/2080/2180
最小转弯半径, 踏板收起/放下 Min.Turning radius	mm	1525/1935	1580/1990	1580/1990
最小直角堆放通道宽度, 踏板收起/放下 (托盘800×1200, 1200沿货叉放置) Min.Aisle width for pallets 800×1200	mm	2130/2520	2180/2580	2180/2580
最小直角堆放通道宽度, 踏板收起/放下 (托盘1000×1200, 1200沿货叉放置) Min.Aisle width for pallets 1000×1200	mm	2160/2540	2210/2600	2210/2600
最小离地间隙 Min.ground clearance	mm	30	30	30

性能 Performance

最大行驶速度, 满载/空载 Travel speed, laden/unladen	km/h	5/5	5/5	5/5
最大起升速度, 满载/空载 Lift speed, laden/unladen	mm/s	130/230	130/230	130/230
最大下降速度, 满载/空载 Lowering speed, laden/unladen	mm/s	130/230	130/230	130/230
爬坡度, 满载/空载 Gradeability, laden/unladen	%	5/7	5/7	5/7

电气配置 Electrical configuration

驱动电机/起升电机/转向电机 Drive motor / Lift motor / Steering motor	KW	AC1.5/DC3/DC0.15	AC1.5/DC3/DC0.15	AC1.5/DC3/DC0.15
蓄电池电压 Battery voltage	V	24	24	24
蓄电池容量 Battery capacity	Ah	210	280	280
制动 Brake		电磁/再生 Electromagnetic / Regenerative		
控制器型号 Controller		CURTIS		

重量 Weight

蓄电池重量 Battery weight	kg	190	235	235
自重(包含蓄电池) Service weight with battery	kg	1110	1204	1330

*本公司保留更改产品设计和规格的权利, 恕不另行通知。